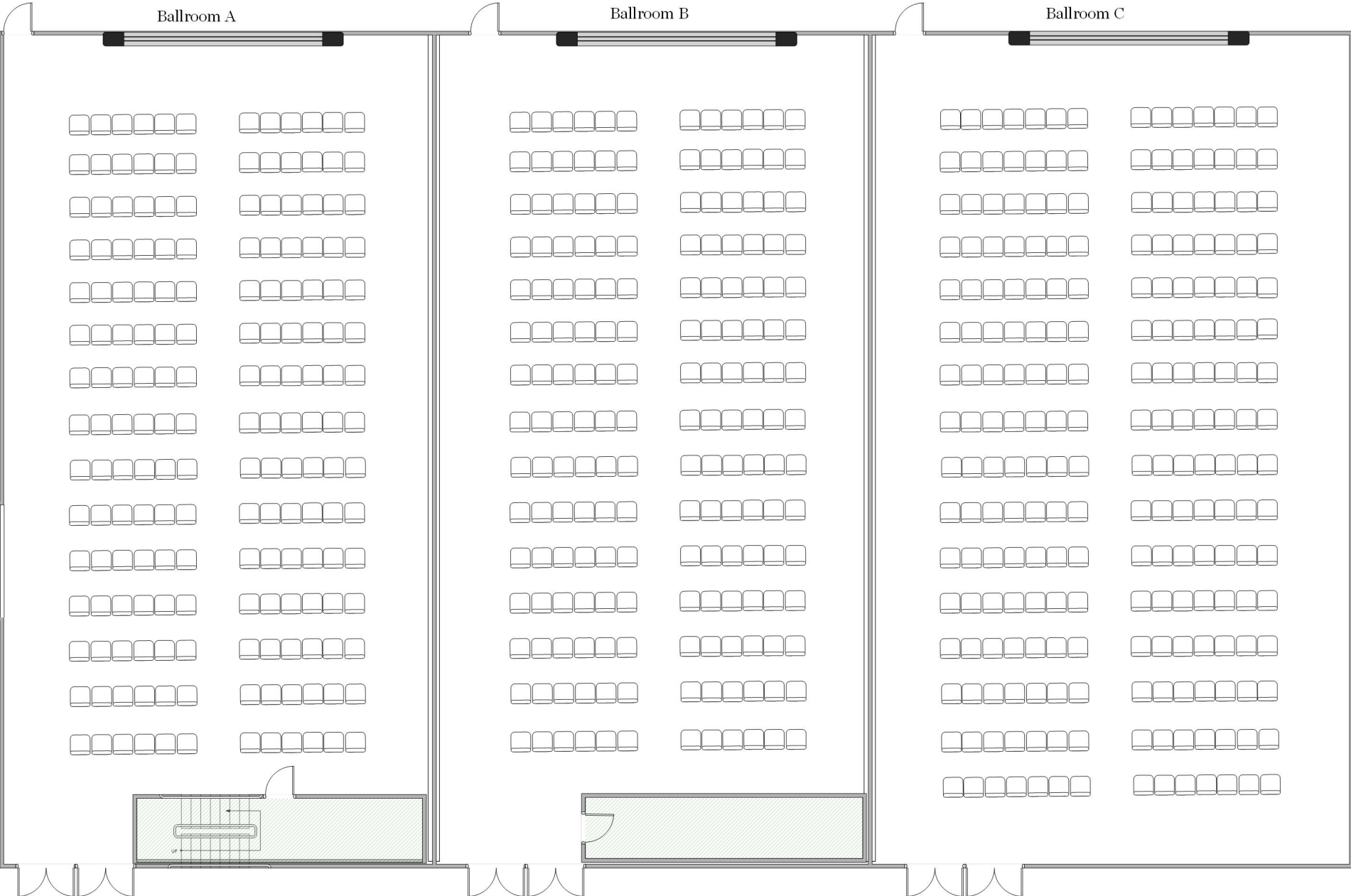


Room Setups for UC BALLROOM

*Please note that adding additional furniture to the room will decrease the listed capacities.

LECTURE

Diagram shows
BALLROOM A,
BALLROOM B, AND
BALLROOM C
as separate rooms



Ballroom A
Capacity – 180

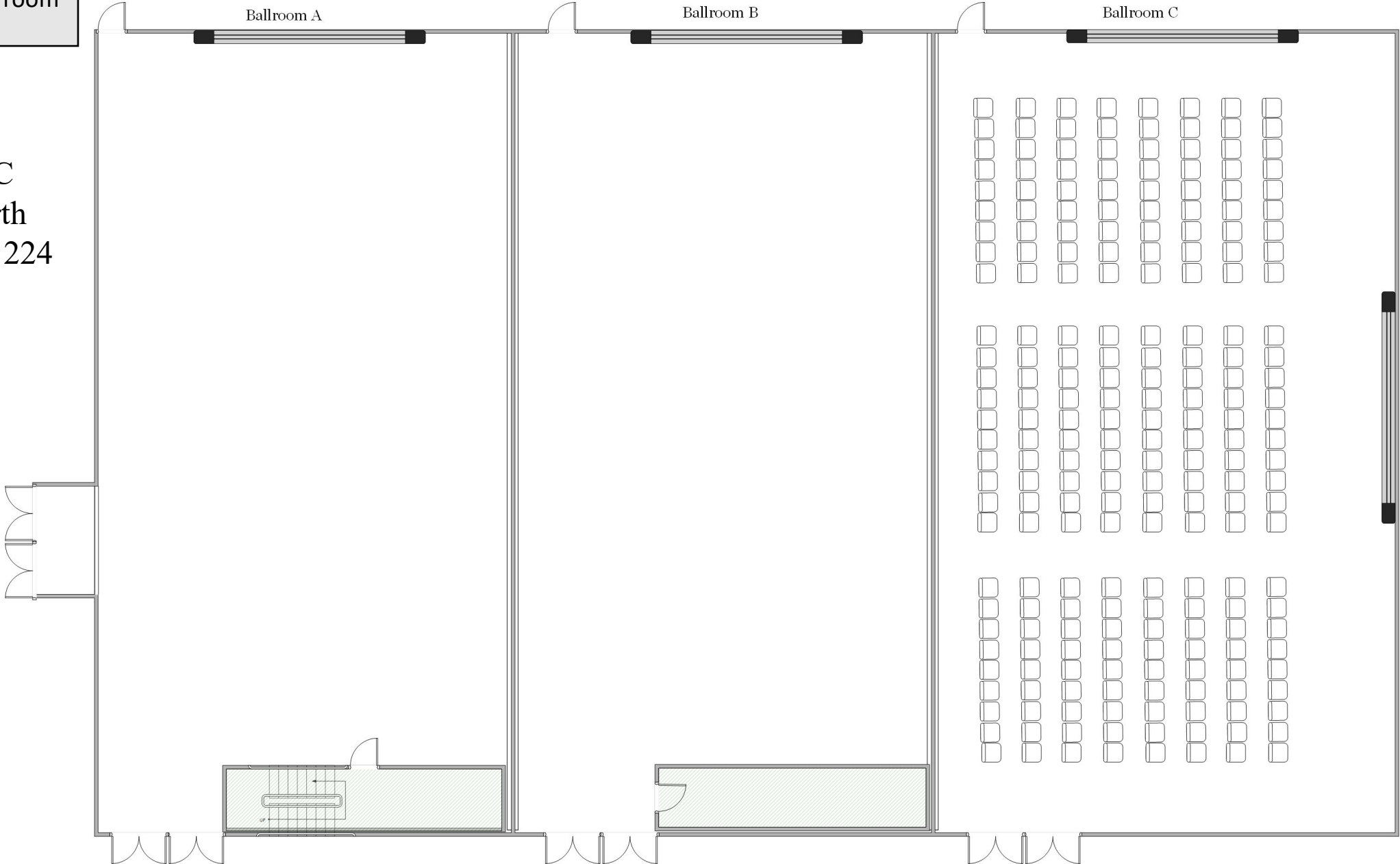
Ballroom B
Capacity – 180

Ballroom C
Capacity - 224

LECTURE

Diagram shows BALLROOM C as a separate room

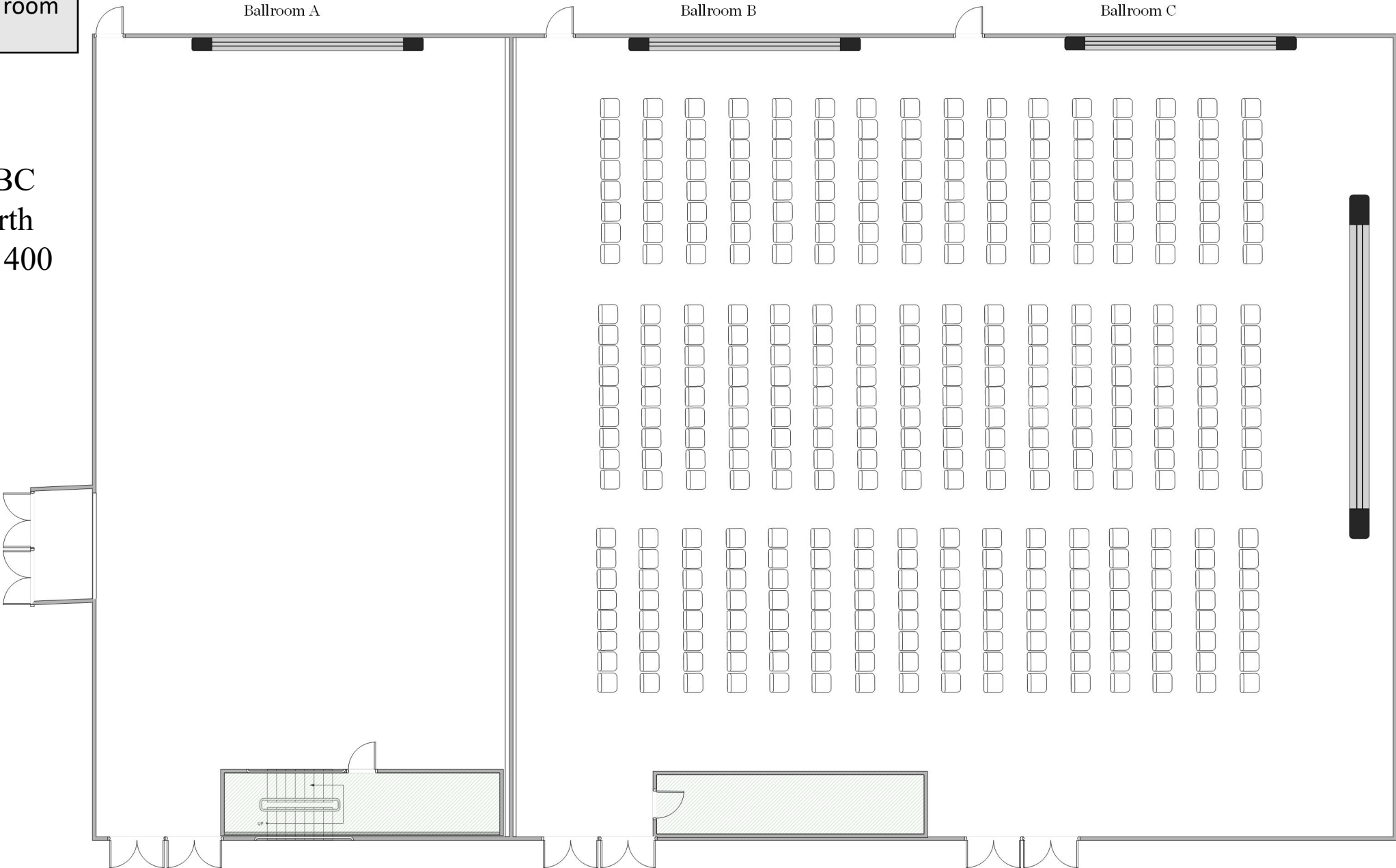
Ballroom C
Facing north
Capacity - 224



LECTURE

Diagram shows
BALLROOM BC
as a separate room

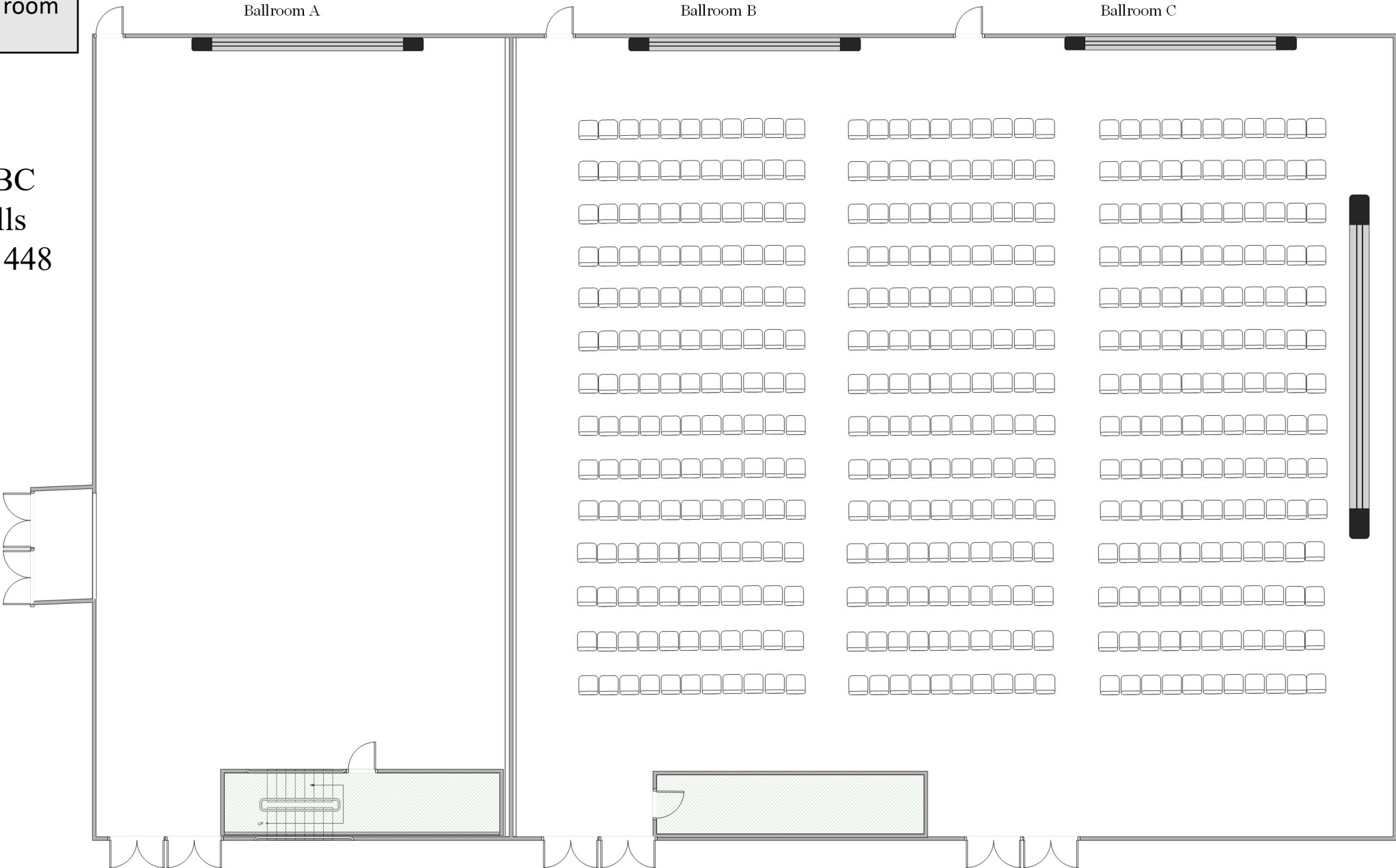
Ballroom BC
Facing North
Capacity - 400



LECTURE

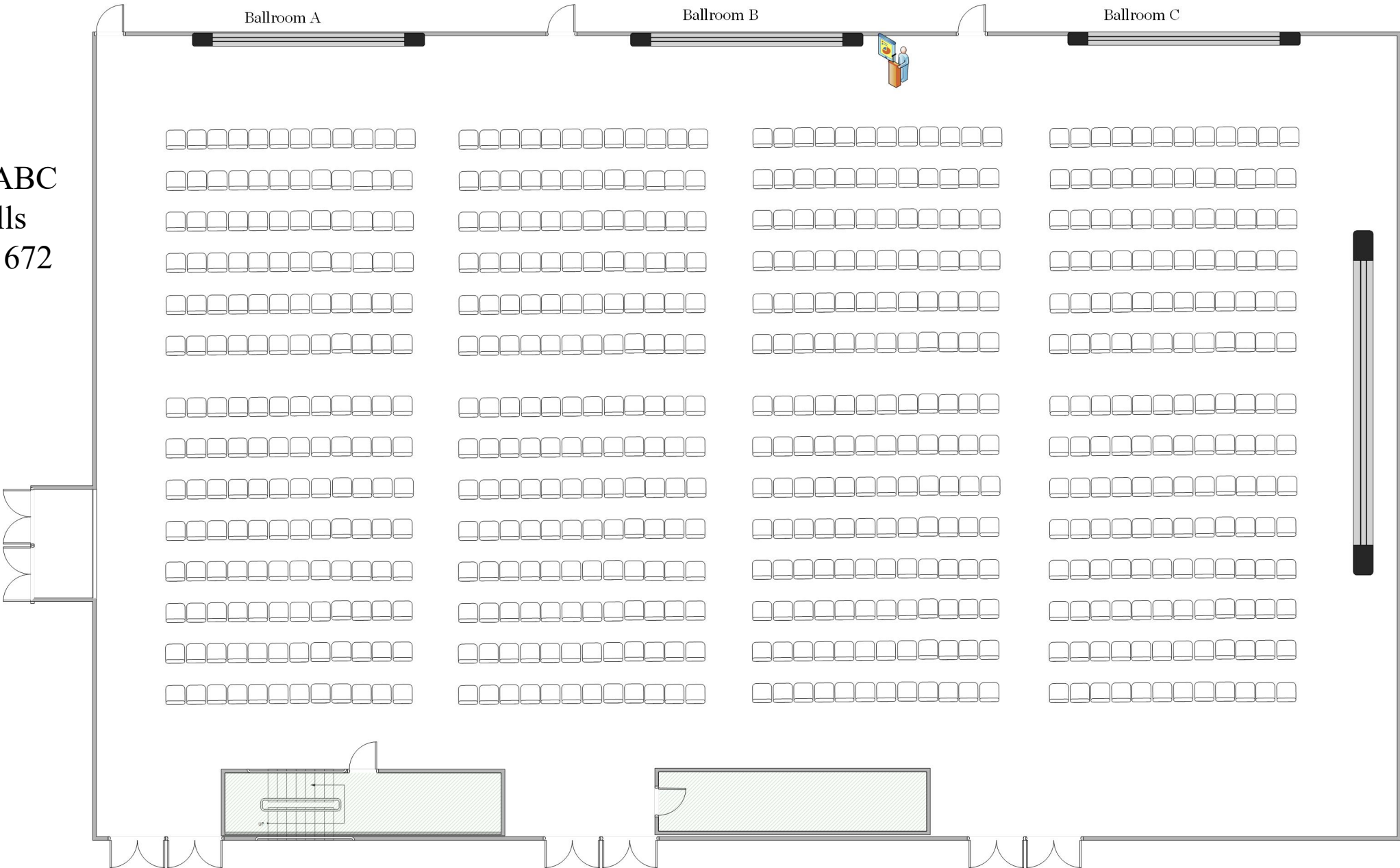
Diagram shows
BALLROOM BC
as a separate room

Ballroom BC
Facing walls
Capacity - 448



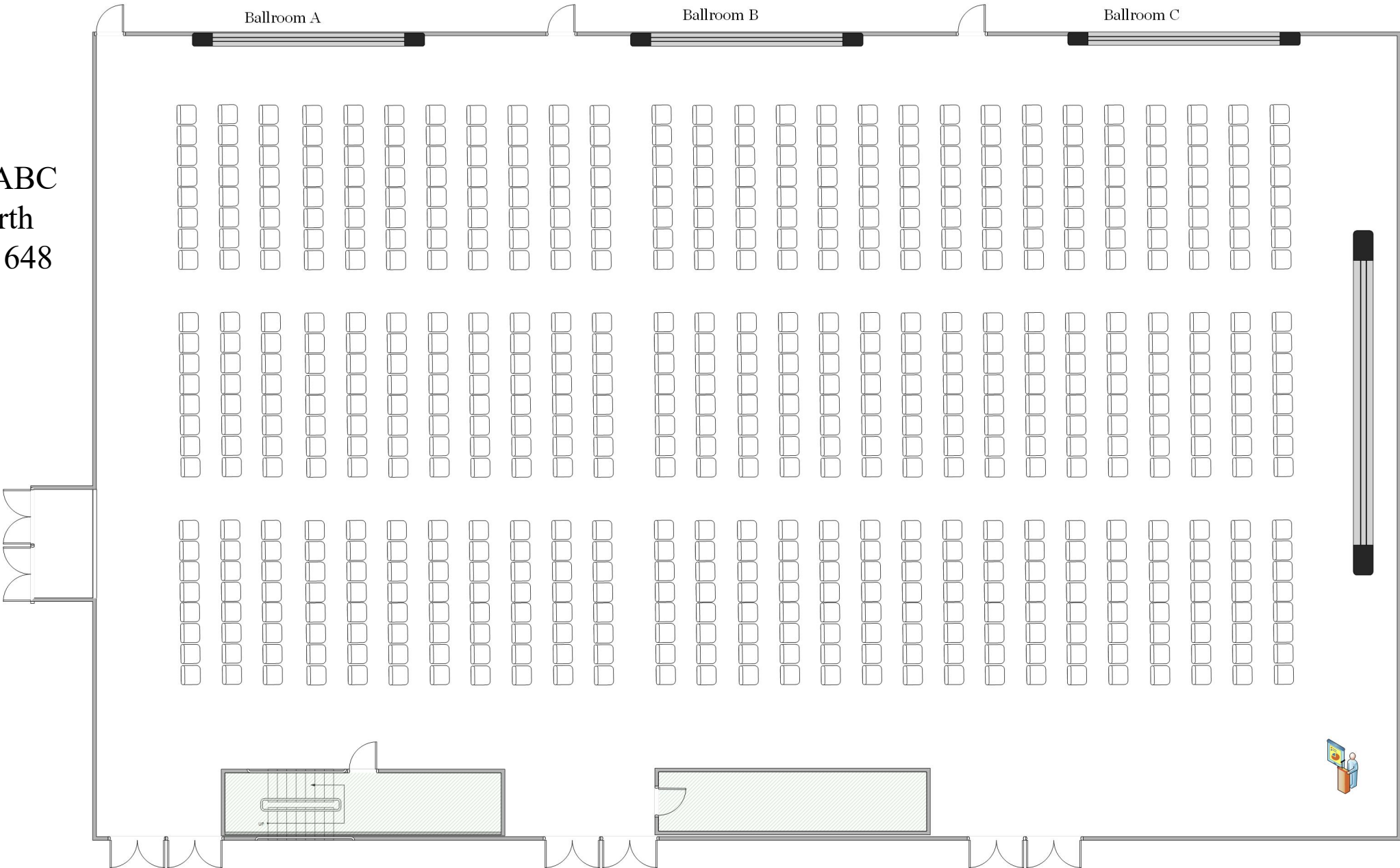
LECTURE

Ballroom ABC
Facing walls
Capacity - 672



LECTURE

Ballroom ABC
Facing North
Capacity - 648



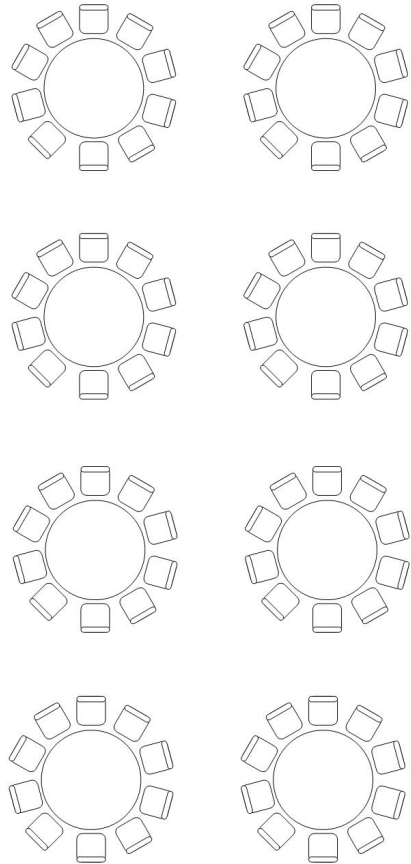
BANQUET ROUNDS

Diagram shows
BALLROOM A
as one room

Ballroom A

Ballroom B

Ballroom C



Ballroom A
Capacity - 80

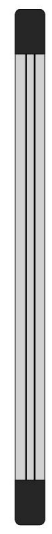
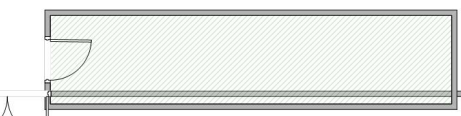
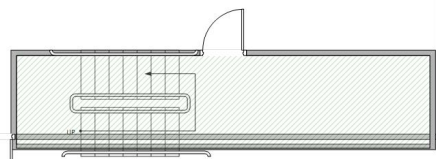
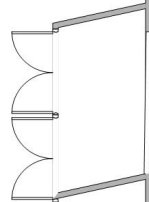


Diagram shows
BALLROOM B
as one room

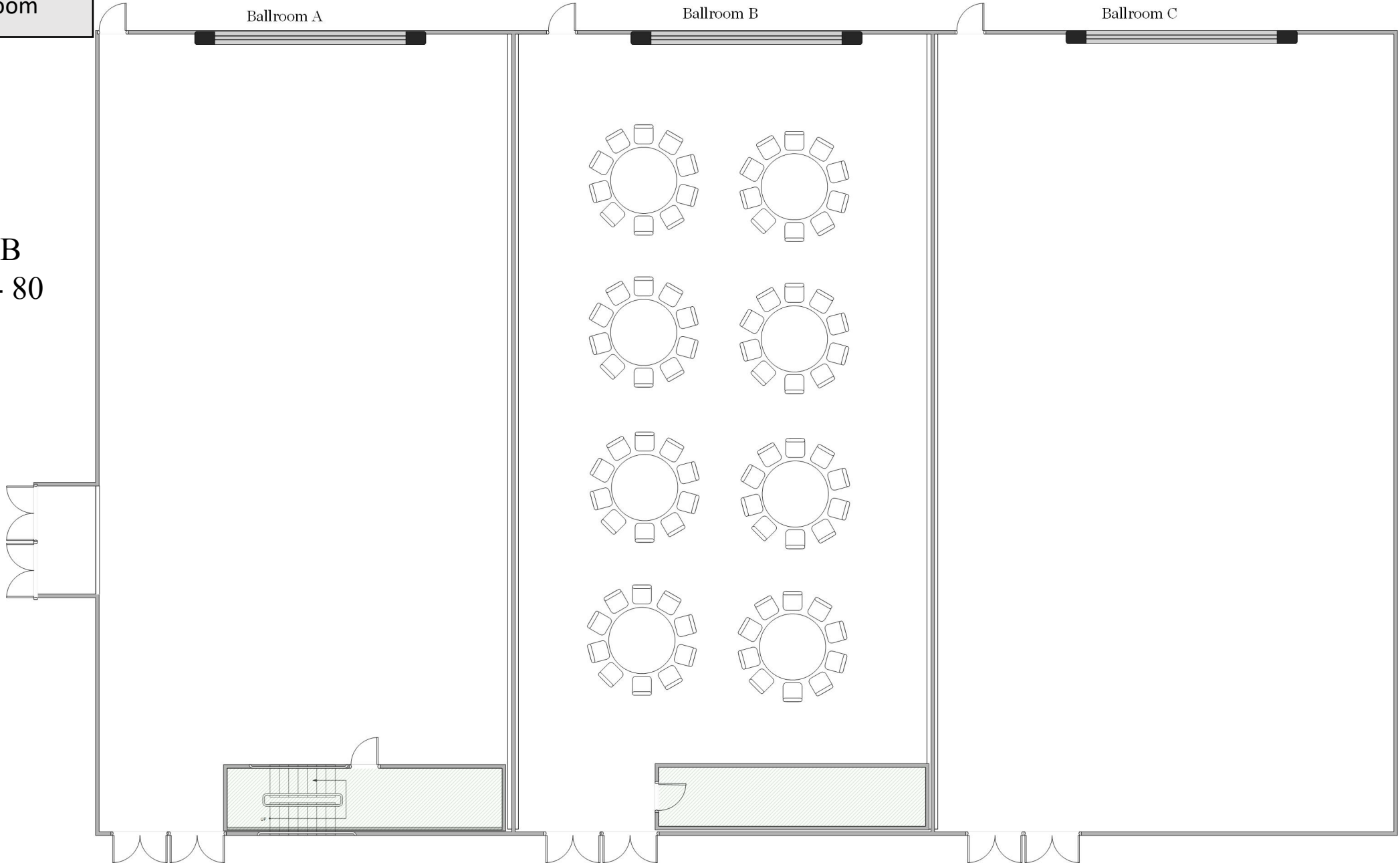
BANQUET ROUNDS

Ballroom A

Ballroom B

Ballroom C

Ballroom B
Capacity - 80



BANQUET ROUNDS

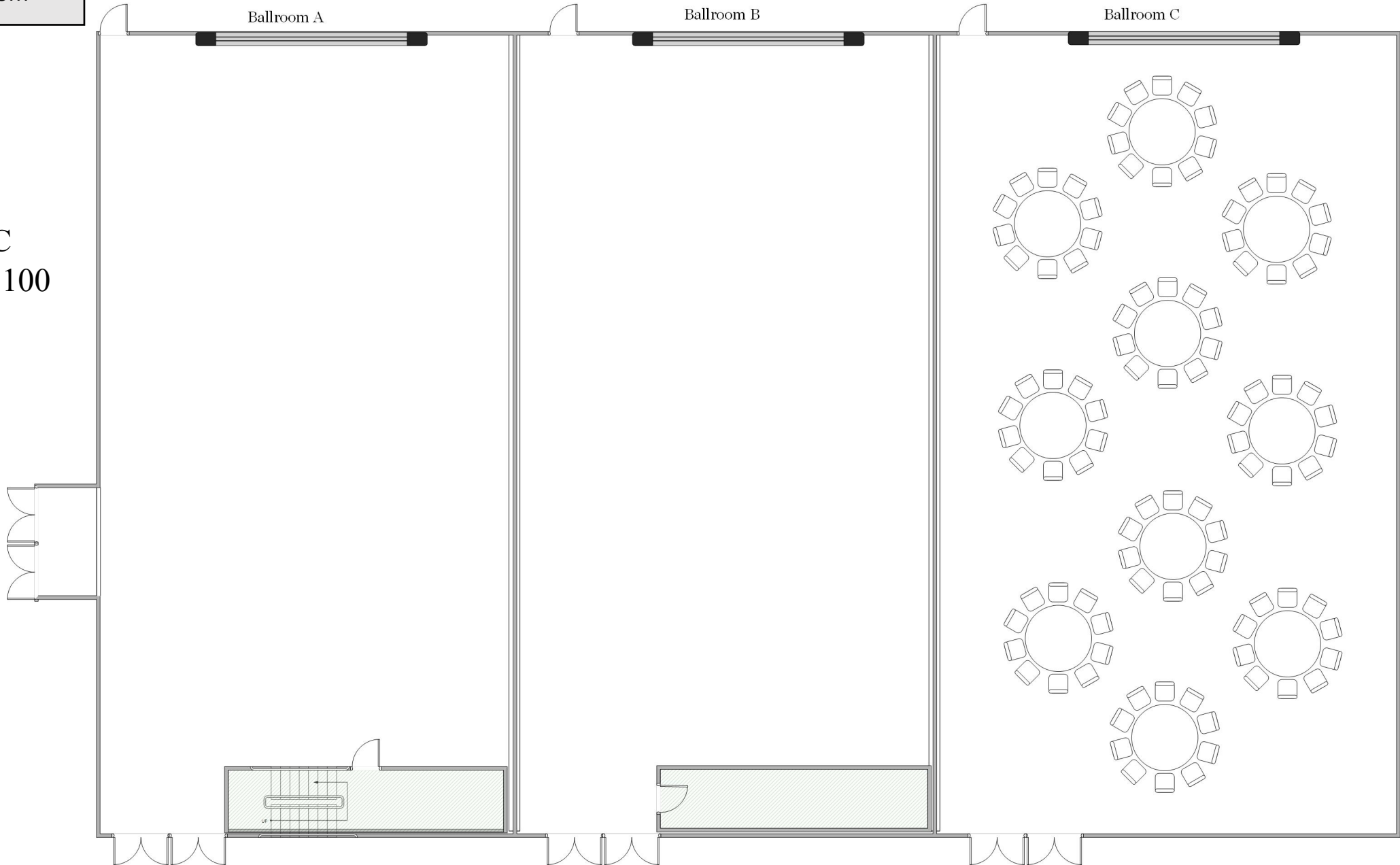
Diagram shows
BALLROOM C
as one room

Ballroom A

Ballroom B

Ballroom C

Ballroom C
Capacity - 100



BANQUET ROUNDS

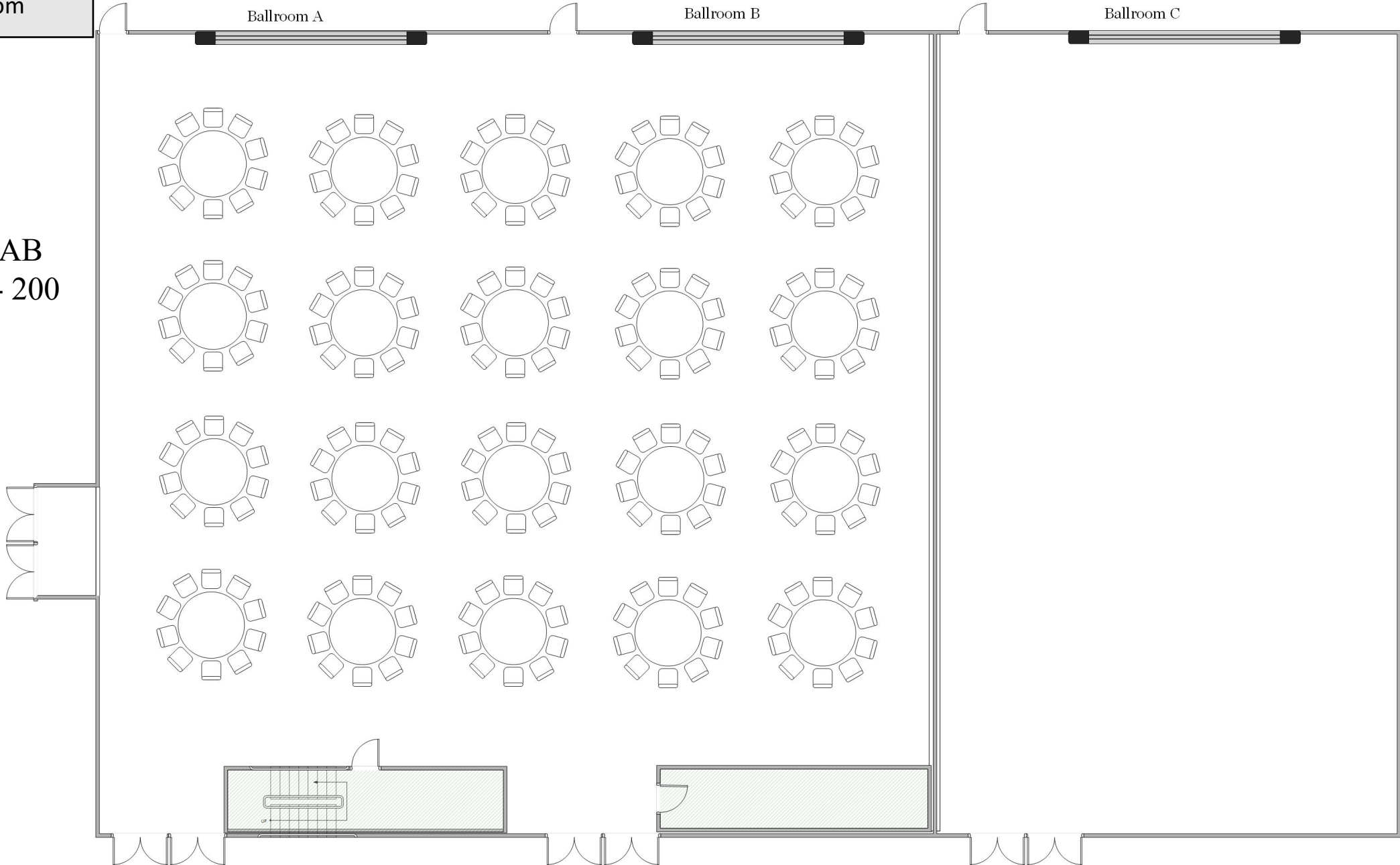
Diagram shows
BALLROOM AB as
one room

Ballroom A

Ballroom B

Ballroom C

Ballroom AB
Capacity - 200



BANQUET ROUNDS

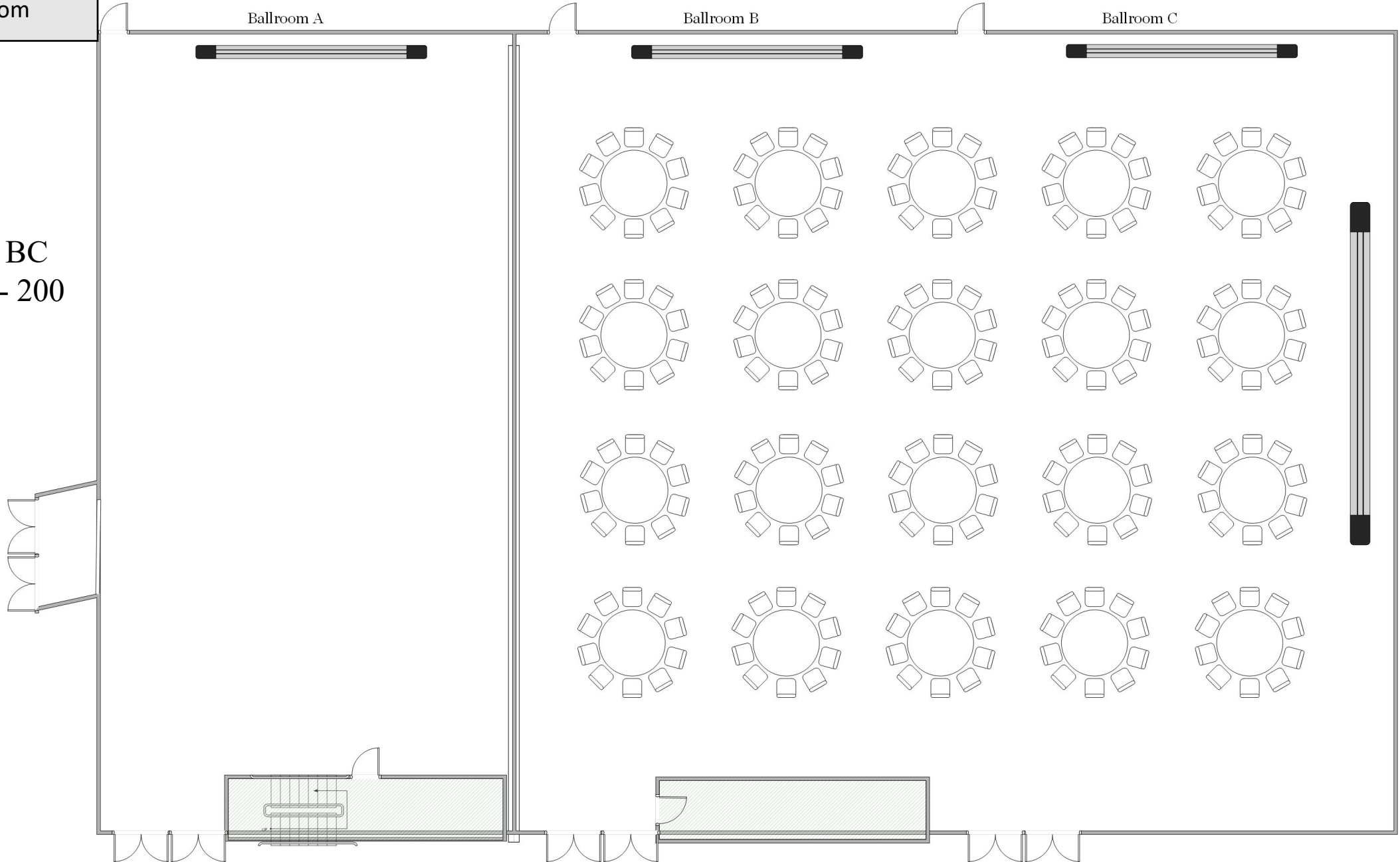
Ballroom A

Ballroom B

Ballroom C

Diagram shows
BALLROOM BC as
one room

Ballroom BC
Capacity - 200



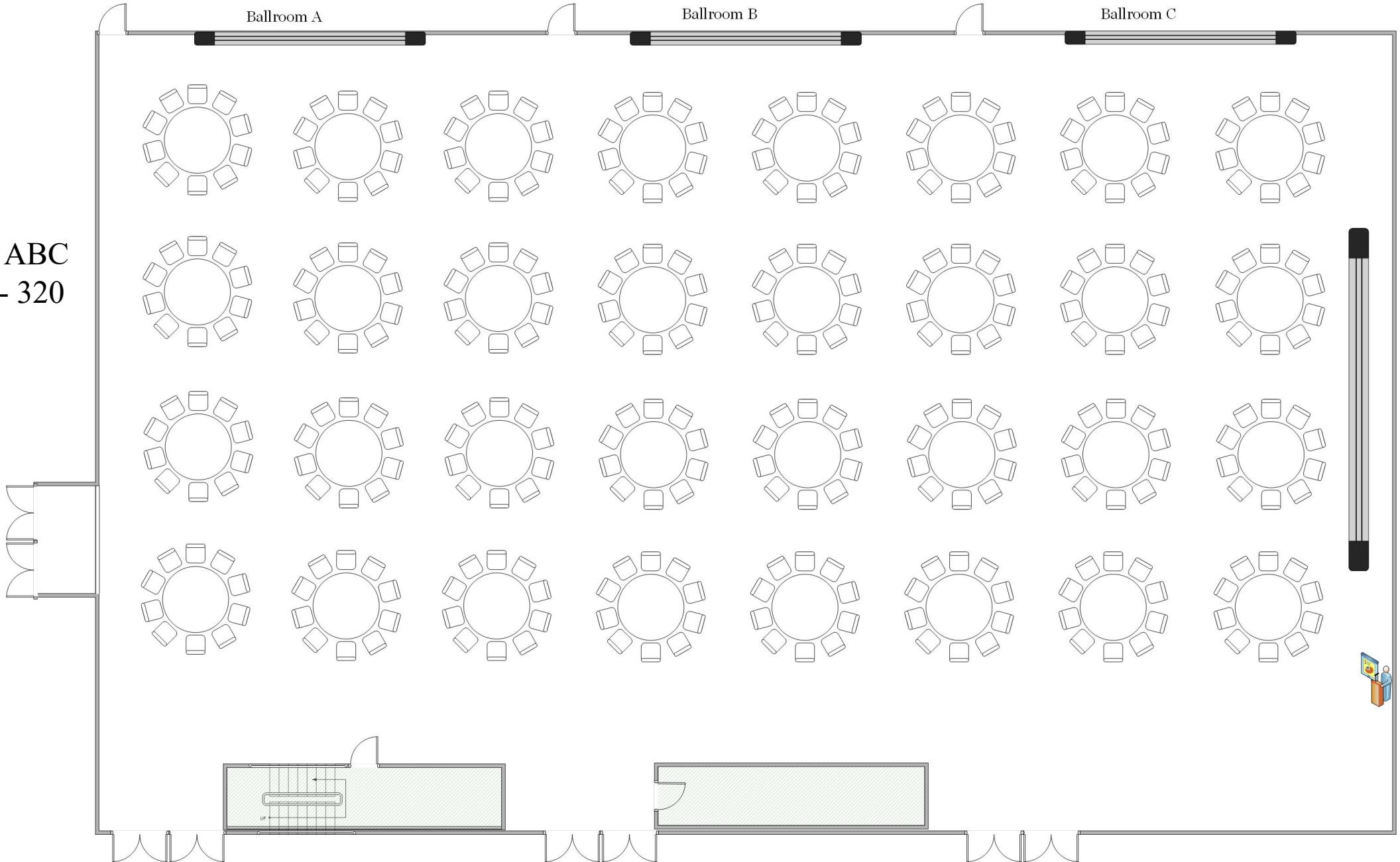
BANQUET ROUNDS

Ballroom A

Ballroom B

Ballroom C

Ballroom ABC
Capacity - 320



CLASSROOM

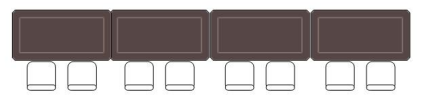
Diagram shows
BALLROOM A,
BALLROOM B, and
BALLROOM C as
separate rooms

Ballroom A

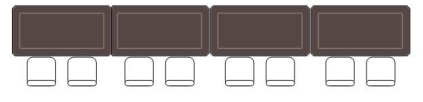
Ballroom B

Ballroom C

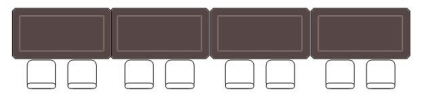
Ballroom A
Capacity – 48



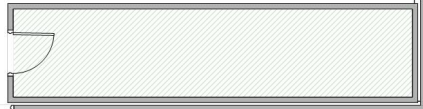
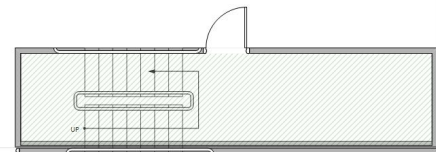
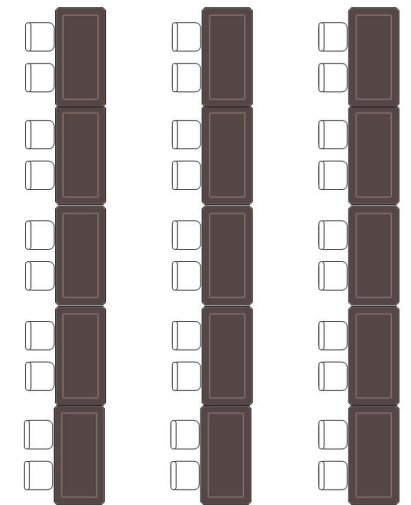
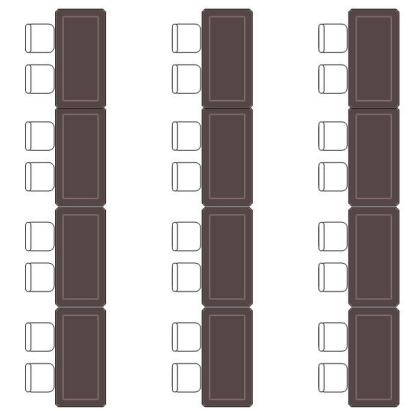
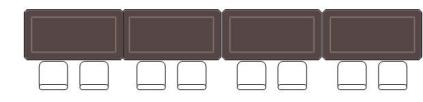
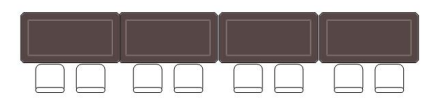
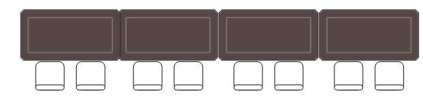
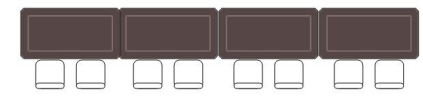
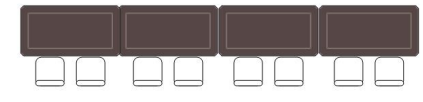
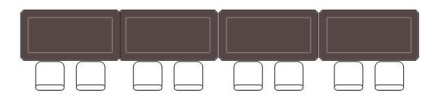
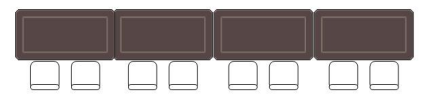
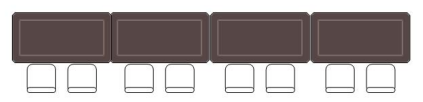
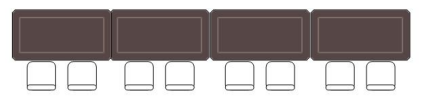
Ballroom B
Capacity – 48



Ballroom C
Facing North
Capacity – 48



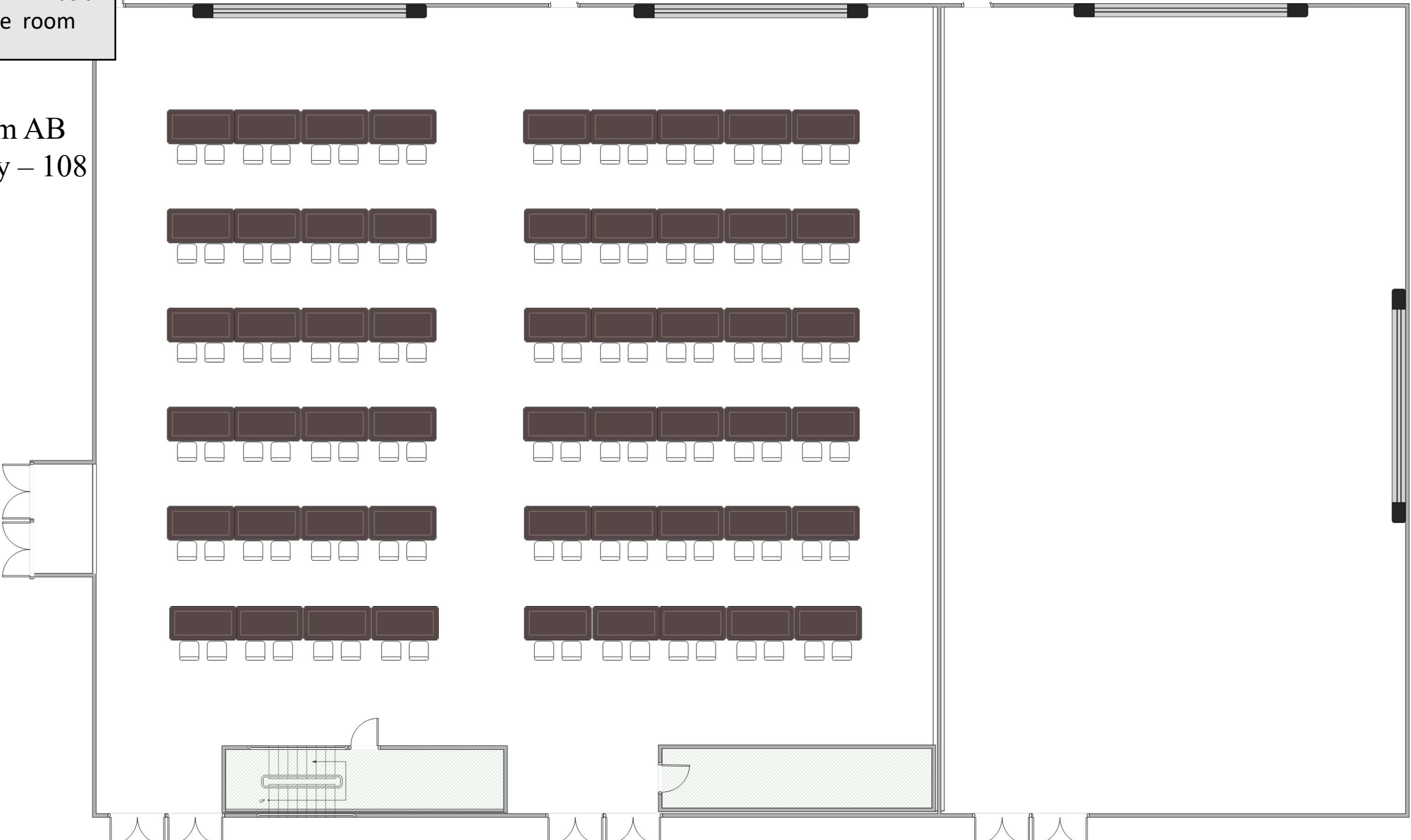
Ballroom C
Facing wall
Capacity - 54



CLASSROOM

Diagram shows
BALLROOM AB as a
separate room

Ballroom AB
Capacity – 108



CLASSROOM

Diagram shows BALLROOM BC as a separate room

Ballroom BC
Facing wall
Capacity – 120



CLASSROOM

Diagram shows
BALLROOM BC as a
separate room

Ballroom BC
Facing north
Capacity – 112

Ballroom A

Ballroom B

Ballroom C



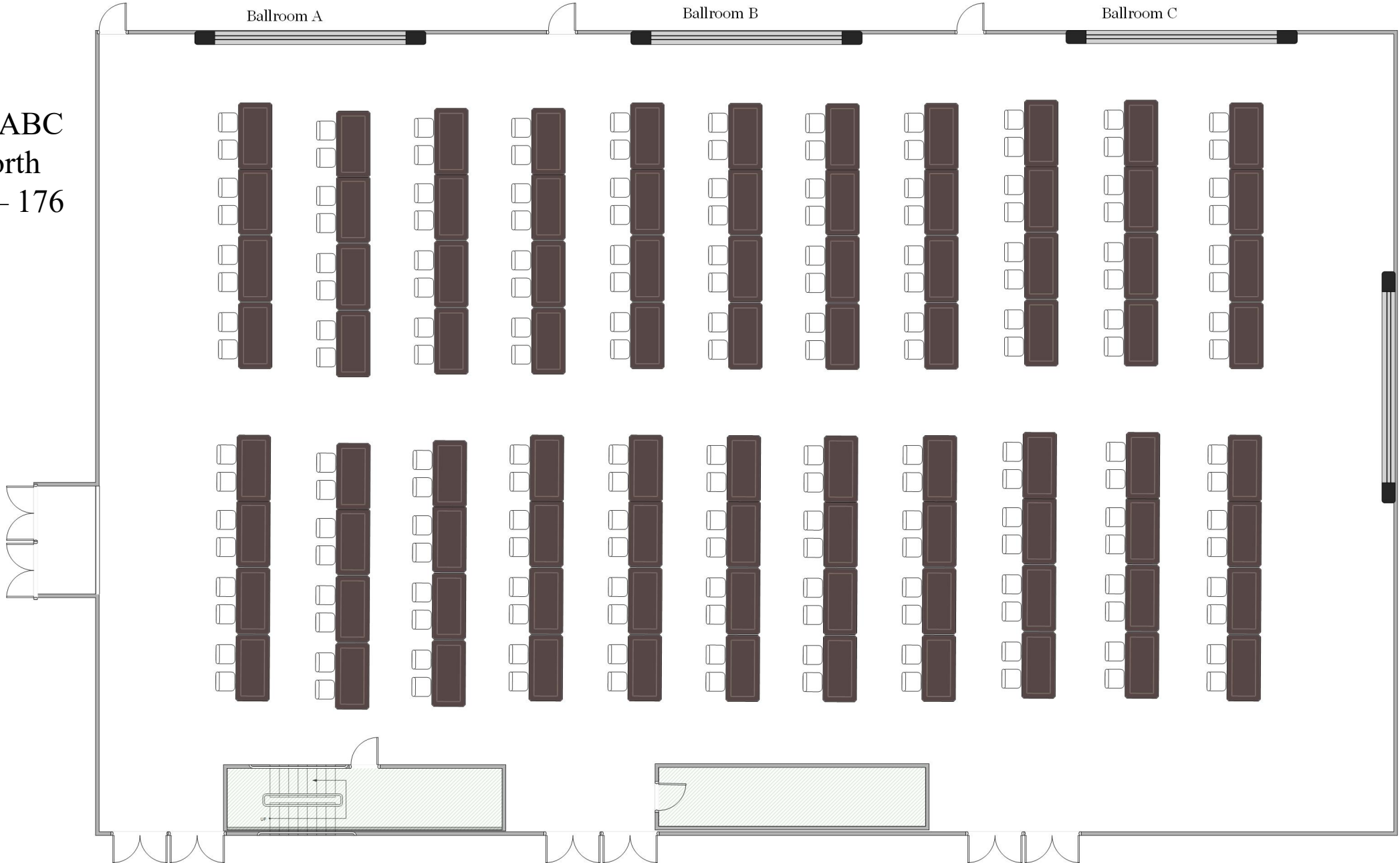
CLASSROOM

Ballroom A

Ballroom B

Ballroom C

Ballroom ABC
Facing North
Capacity – 176



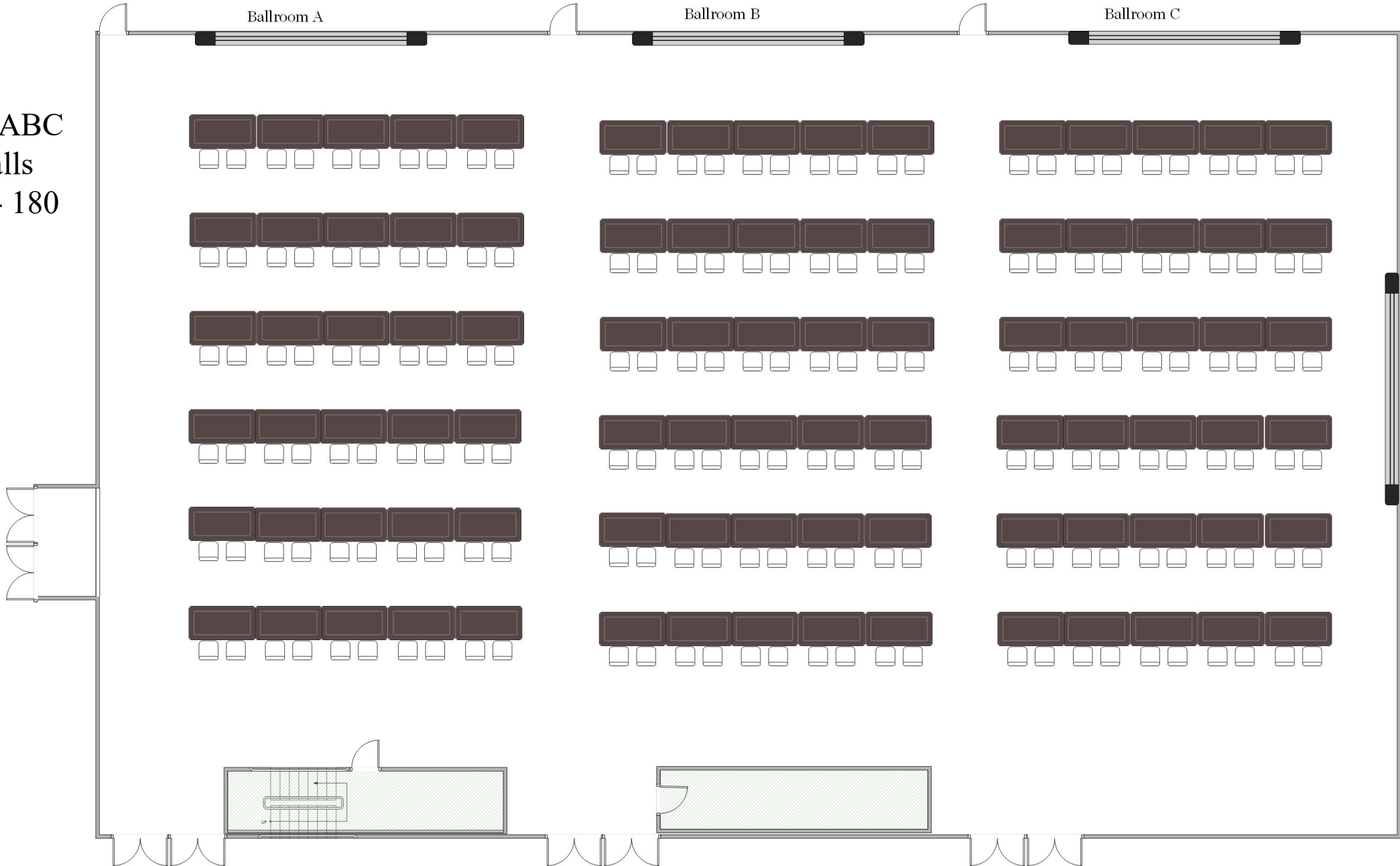
CLASSROOM

Ballroom A

Ballroom B

Ballroom C

Ballroom ABC
Facing walls
Capacity - 180



CONFERENCE SQUARE

Diagram shows
BALLROOM A,
BALLROOM B, and
BALLROOM C as
separate rooms

Ballroom A

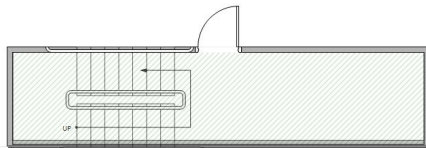
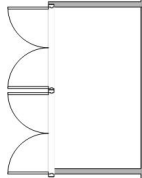
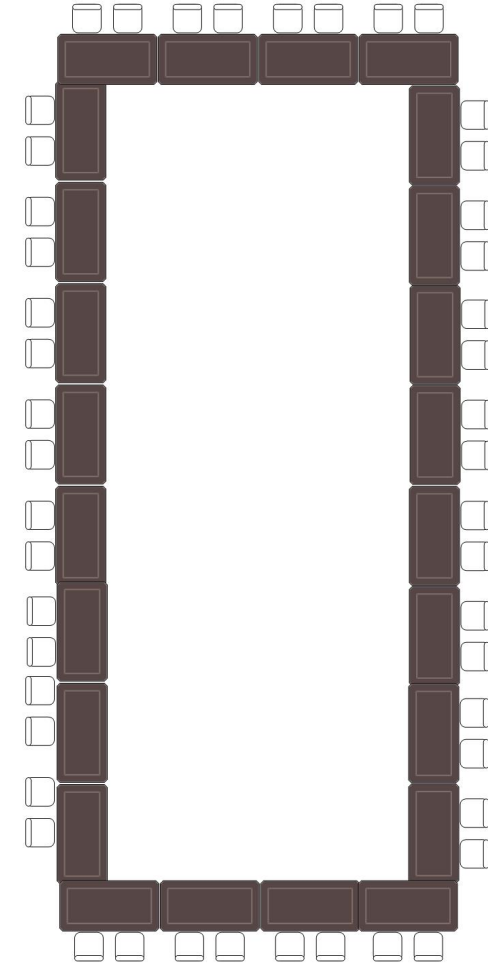
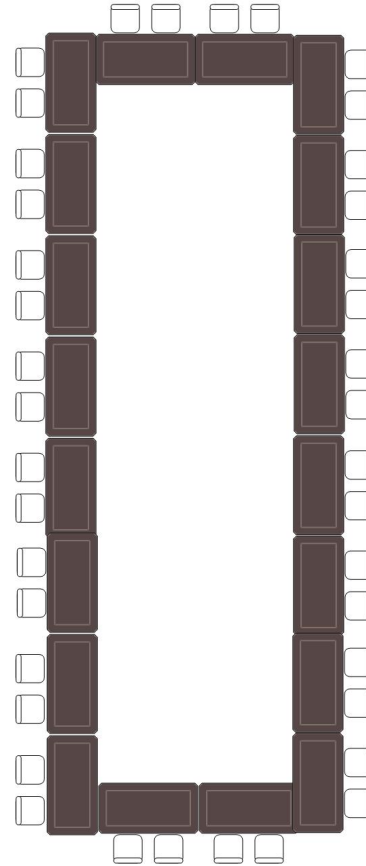
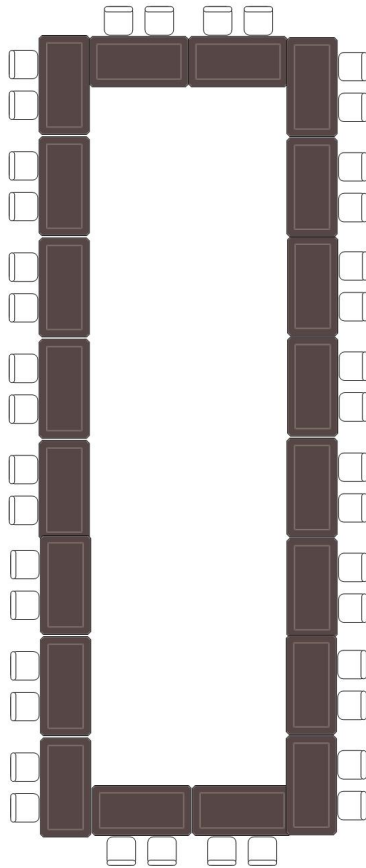
Ballroom B

Ballroom C

Ballroom A
Capacity – 40

Ballroom B
Capacity – 40

Ballroom C
Facing North
Capacity – 48



CONFERENCE SQUARE

Diagram shows
BALLROOM AB as a
separate room

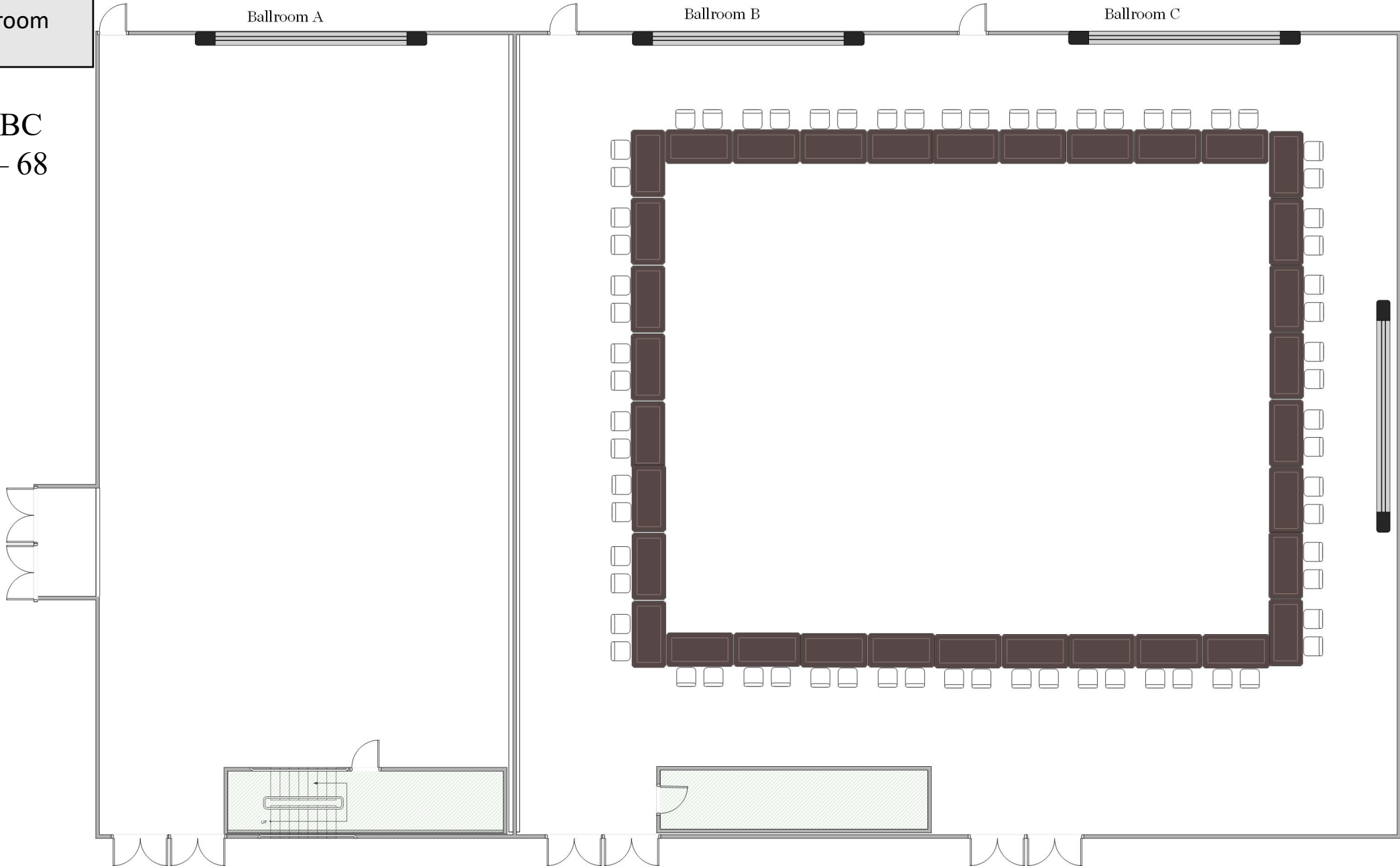
Ballroom AB
Capacity – 64



CONFERENCE SQUARE

Diagram shows
BALLROOM AB as a
separate room

Ballroom BC
Capacity – 68



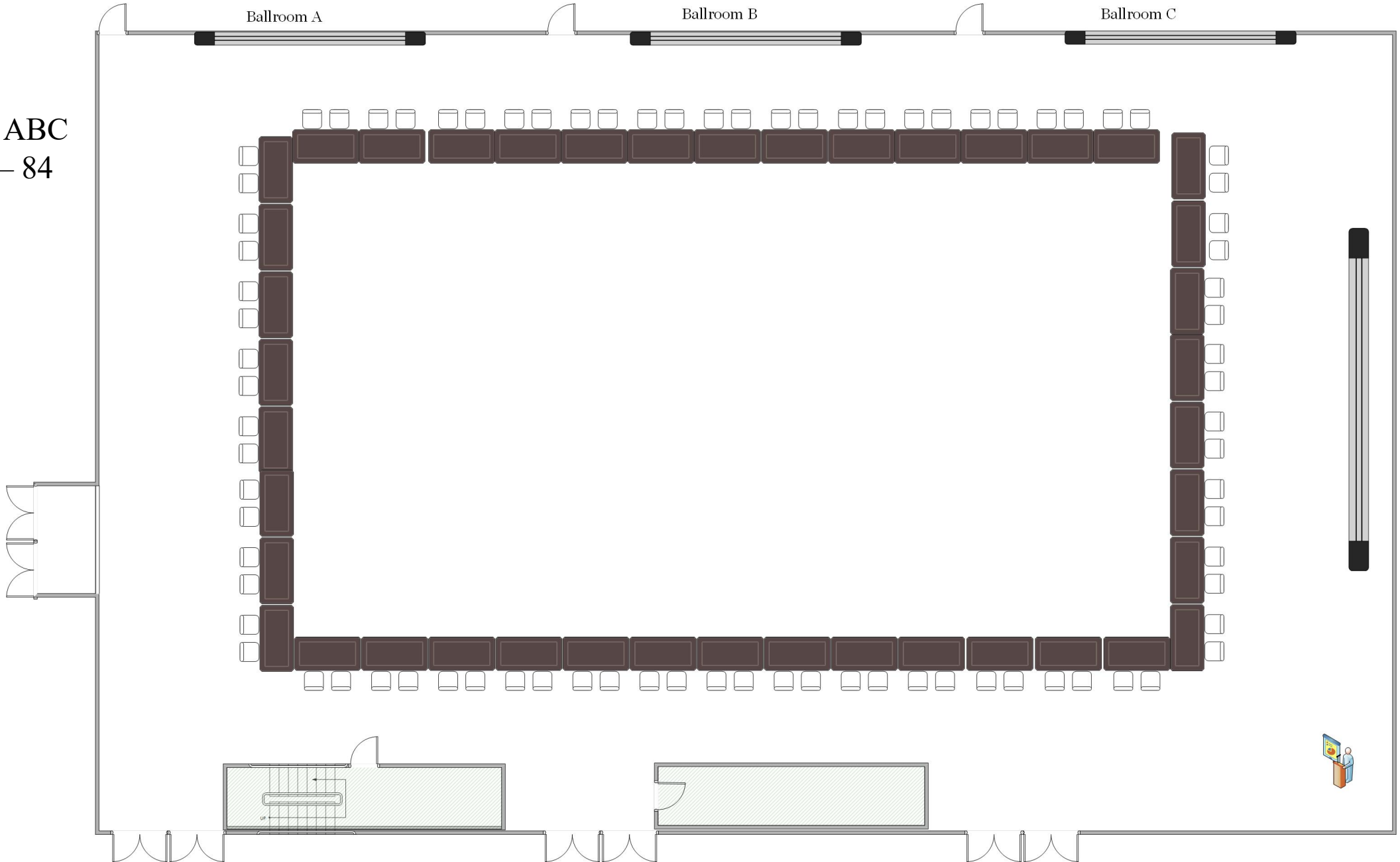
CONFERENCE SQUARE

Ballroom A

Ballroom B

Ballroom C

Ballroom ABC
Capacity – 84

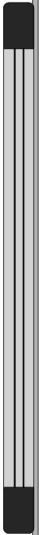
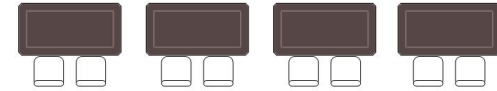
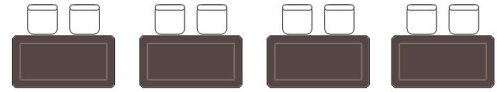
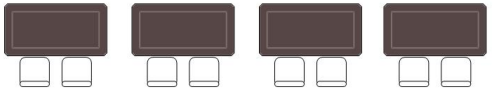
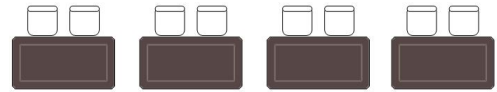
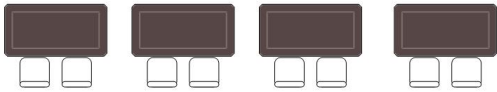
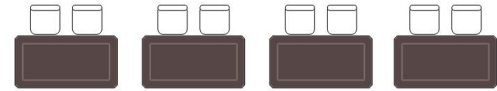
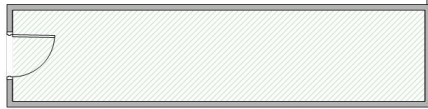
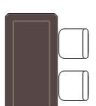
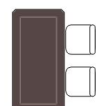
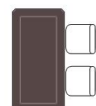
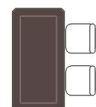
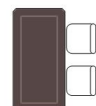
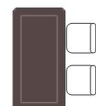
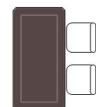
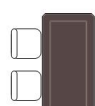
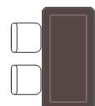
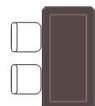
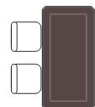
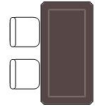
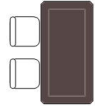
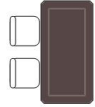
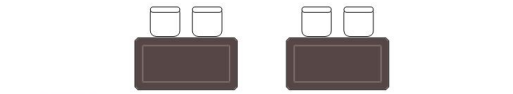
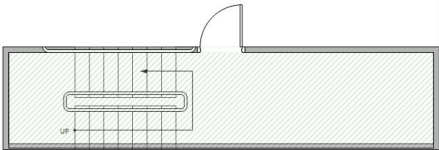
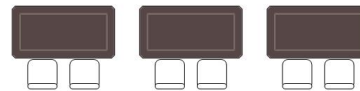
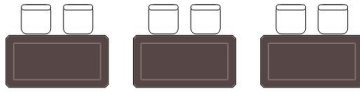
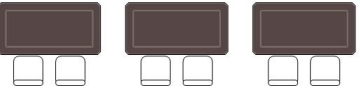
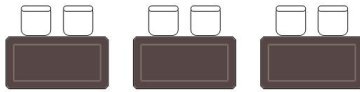
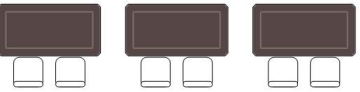
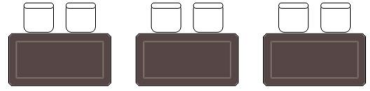
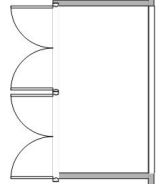


EXHIBIT

Diagram shows
BALLROOM A,
BALLROOM B, and
BALLROOM C as
separate rooms

Ballroom A & Ballroom B
Capacity – 36 – 18 tables
OR
Capacity – 32 – 16 tables

Ballroom C
Capacity – 54 – 27 tables
OR
Capacity – 34 – 17 tables



EXHIBIT

Diagram shows
BALLROOM AB as a
separate room

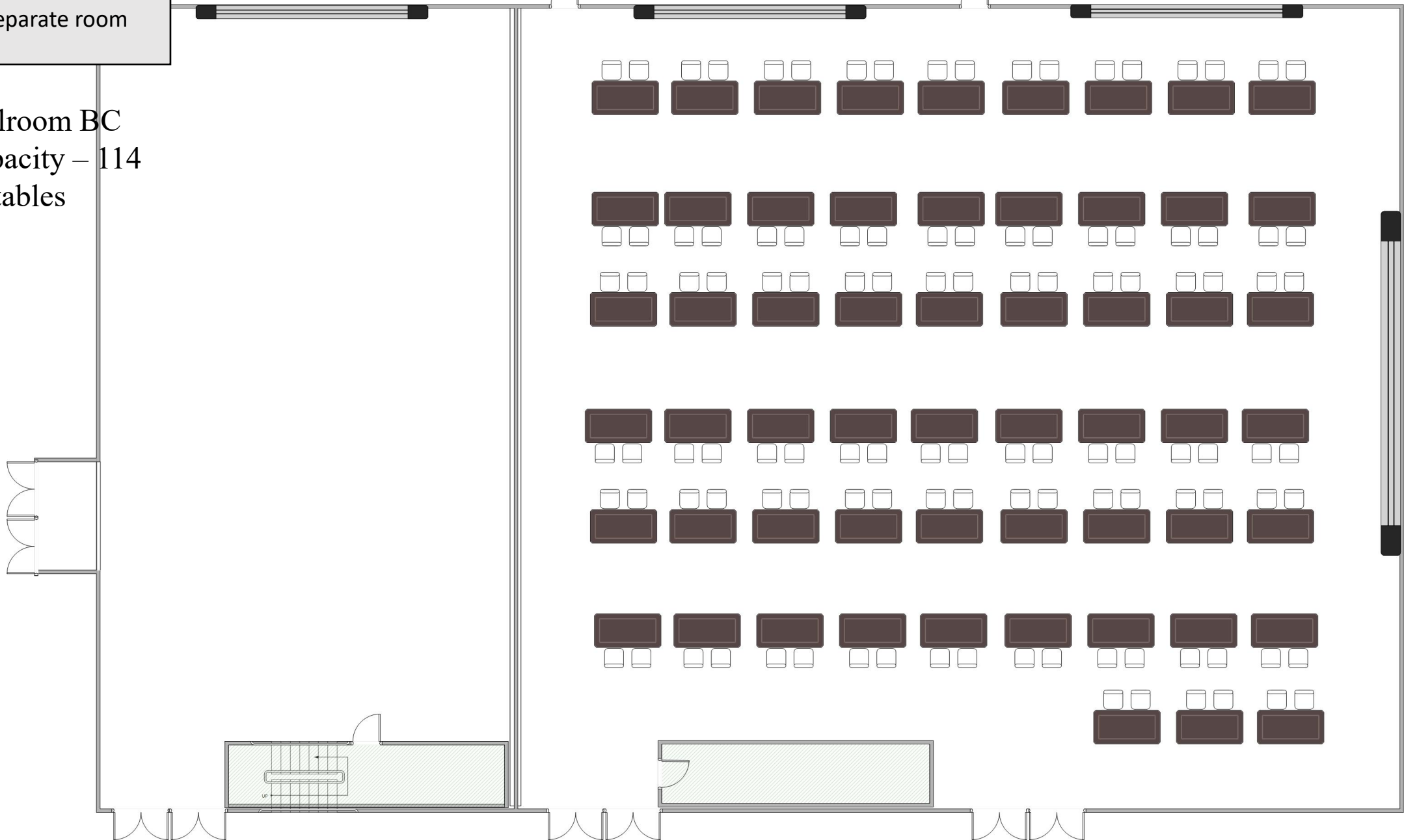
Ballroom AB
Capacity – 96
48 tables



EXHIBIT

Diagram shows
BALLROOM BC as a
separate room

Ballroom BC
Capacity – 114
57 tables



EXHIBIT

Ballroom A

Ballroom B

Ballroom C

Ballroom ABC
Capacity – 154
77 tables

